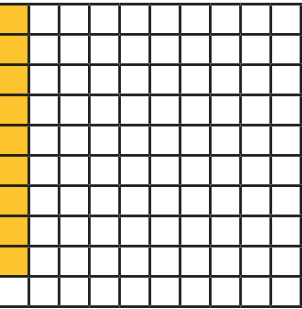
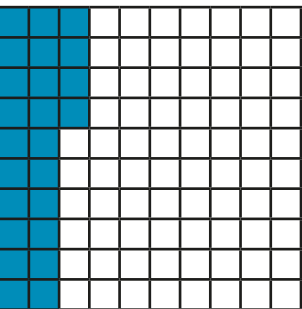
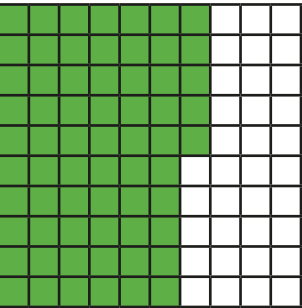


Understand percentages

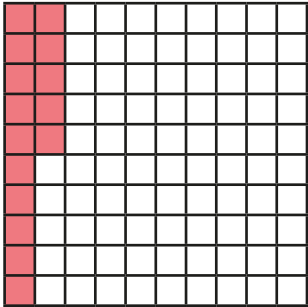
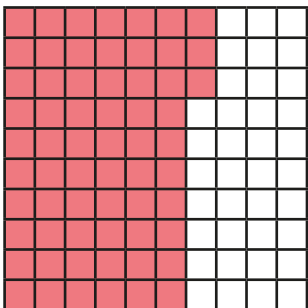
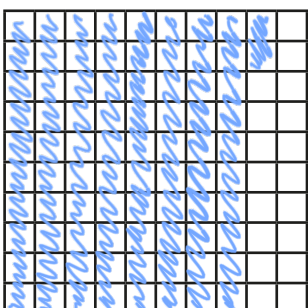
1 Complete the sentence for each diagram.

a)  There are parts out of a hundred shaded.
This is %.

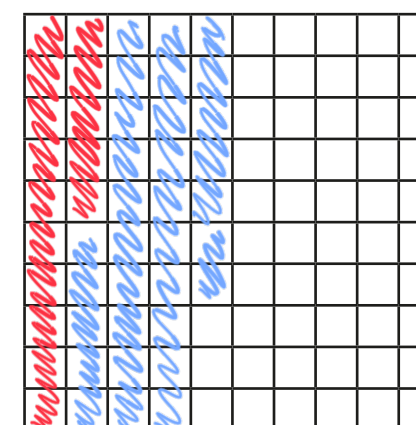
b)  There are parts out of a hundred shaded.
This is %.

c)  There are parts out of a hundred shaded.
This is %.

2 Complete the table.

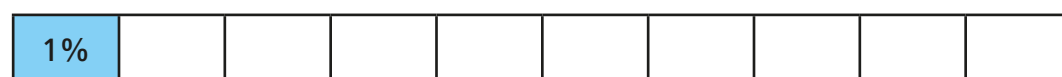
Hundred square	Percentage
	15%
	63%
	82%

3 Shade 15% of the hundred square red.
Shade 32% of the hundred square blue.



What percentage of the hundred square is **not** shaded? %

- 4 a) Is 1% of this bar model shaded? No



Explain your reasoning.

It's split into 10 parts so each part is 10%

- b) What percentage of each bar model is shaded?



30 %



70 %

- 5 Passengers are boarding a plane.

The plane has 100 seats.

- a) 10% of the seats are already full.

How many passengers are already on the plane?

10

- b) 15% of the seats have not been booked.

How many seats have been booked?

85

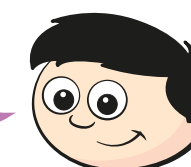
- c) How many passengers still need to board the plane?

75

- 6 Dexter has £1 to spend.
He buys some stickers.



I got 35p change.



What percentage of his money did Dexter spend?

$$£1 - 35p = 65p \leftarrow \text{spent}$$

65 %

$$\frac{65p}{100p}$$

- 7 Aisha and Brett have been selling tickets for the school play.

There are 100 seats available.

- On Monday they sold 34% of the tickets. (34)
- On Tuesday they sold 42 tickets.
- By the end of Wednesday, 95% of the tickets had been sold. (95)

How many tickets did they sell on Wednesday?

$$34 + 42 = 76$$

$$95 - 76 = 19$$

On Wednesday they sold 19 tickets.

- 8 Shade 85% of this bar model.



Compare answers with a partner.