

En

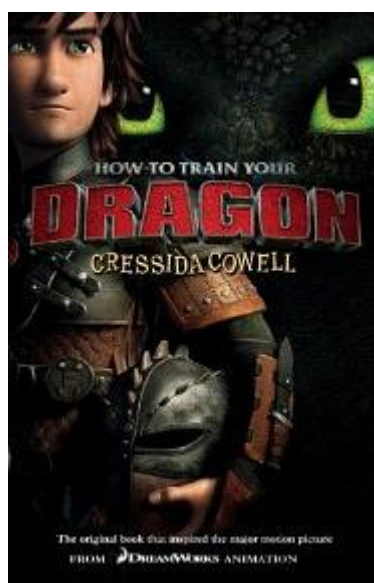
KEY STAGE
2

LEVELS

English tests

English reading answer booklet

First name						
Middle name						
Last name						
Date of birth	Day		Month		Year	
School name						
DfE number						



Instructions

Questions and answers

You have one hour to complete the test, answering the questions in the answer booklet. Read one text and answer the questions about that text before moving on to read the next text.

There are three texts and three sets of questions.

In this booklet, there are different types of question for you to answer in different ways. The space for your answer shows you what type of writing is needed.

- **short answers:** some questions are followed by a short line or box. This shows that you need only write a word or phrase in your answer.
- **several line answers:** some questions are followed by a few lines. This gives you space to write more words or a sentence or two.
- **longer answers:** some questions are followed by a large box. This shows that a longer, more detailed answer is needed to explain your opinion. You can write in full sentences if you want to.
- **other answers:** for some questions you do not need to write anything at all and you should tick, draw lines to, or put a ring around your answer. Read the instructions carefully so that you know how to answer the question.

Marks

The number under each box at the side of the page tells you the maximum number of marks for each question.

You should work through the booklet until you are asked to stop, referring to your reading booklet when you need to. When a question includes a page reference, you should refer to the text on that page to help you with your answer.

You have one hour to read the texts in the reading booklet and answer the questions in this booklet.

This set of questions is on an extract from
'How To Train Your Dragon' by Cressida Cowell.

1. What is the name of the isle the story takes place upon?

☐

1 mark

2. On what page can you find the chapter **Heroes or exiles**?

☐

1 mark

3. What is happening to the dragons?

☐

1 mark

4. Which types of dragon live on and around the island? Tick **two**.

☐

Great, grim, sky dragons.

☐

Dragons made from metal.

☐

Little, brown, scuttly dragons.

☐

Blue dragons with three heads.

☐

1 mark

5. Find two reasons why Gobber is a fearsome Viking:

1. _____

2. _____

☐

2 marks

6. What is Hiccup's full title?



1 mark

7. How did the cliff differ in summer and winter?



2 marks

8. What does the word *bleak* mean?



1 mark

9. Which technique has the writer used in his description of the dragons in this example:

...like gigantic scary birds...



1 mark

10. How is the note from Hiccup at the beginning of the book different to the extract from chapter 1 which follows it? Give **two** reasons.



2 marks

11. **There are reasons both for and against Hiccup being the leader of the group during the burglary.**

Find at least two quotes as evidence to show this statement is correct.

3 marks

12.

	true	false
Dragons hibernate during the winter.		
Berk is a warm and sunny island.		
Some dragons are bigger than Blue Whales.		
Gobbler is a skinny man.		
Limpets are tastier than snot.		

2 marks