

Multiply 3-digits by 1-digit

1 Filip uses a place value chart to help him multiply a 3-digit number by a 1-digit number.

Hundreds	Tens	Ones
100	10 10	1 1 1 1
100	10 10	1 1 1 1
100	10 10	1 1 1 1

a) What multiplication is Filip working out?

$$\square \times \square$$

b) What is the answer to Filip's multiplication?

2 Use place value counters to complete the multiplications.

a) $3 \times 213 =$

d) $6 \times 106 =$

b) $4 \times 216 =$

e) $4 \times 209 =$

c) $5 \times 106 =$

f) $317 \times 3 =$



3 Complete the multiplication.

Use the place value chart to help you.

H	T	O
100 100	10	1 1 1 1 1
100 100	10	1 1 1 1 1
100 100	10	1 1 1 1 1

		H	T	O	
		2	1	5	
	x			3	

4 Complete the multiplications.

a)

		H	T	O	
		2	1	7	
	x			4	

c)

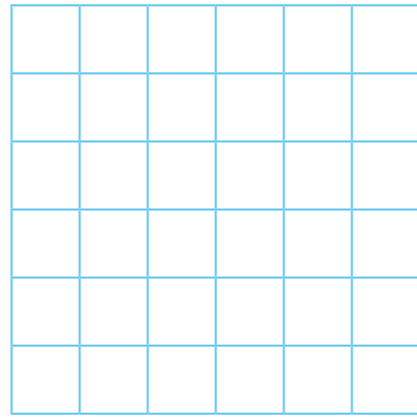
		H	T	O	
		1	0	8	
	x			6	

b)

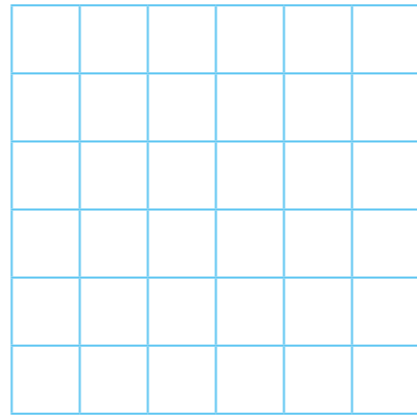
		H	T	O	
		4	3	9	
	x			2	

d) 163×5

e) 3×240

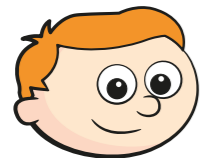


f) 7×131



- 5 A lorry driver travels 156 km per day.
How many kilometres will the lorry driver have travelled after 3 days?

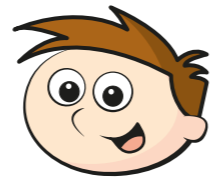
- 6 Ron and Teddy are working out 5×245



Ron

I know the answer will be greater than 1,000 because I know 5×200 is 1,000

I know the answer should end in 5 because I know 5×5 is 25



Teddy

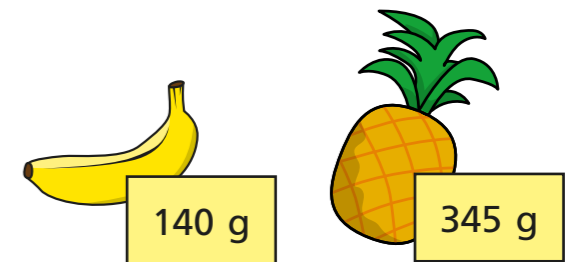
- a) Who is correct? Circle your answer.

Ron Teddy both neither

- b) Use a written method to work out 5×245

- 7 There are 7 year groups in a school.
There are 112 children in each year group.
How many children are there in the whole school?

- 8 A banana weighs 140 g
A pineapple weighs 345 g



- Bag A contains 8 bananas and bag B contains 3 pineapples.
Which bag weighs more and by how much?
Show your working.

Bag _____ weighs g more than bag _____.