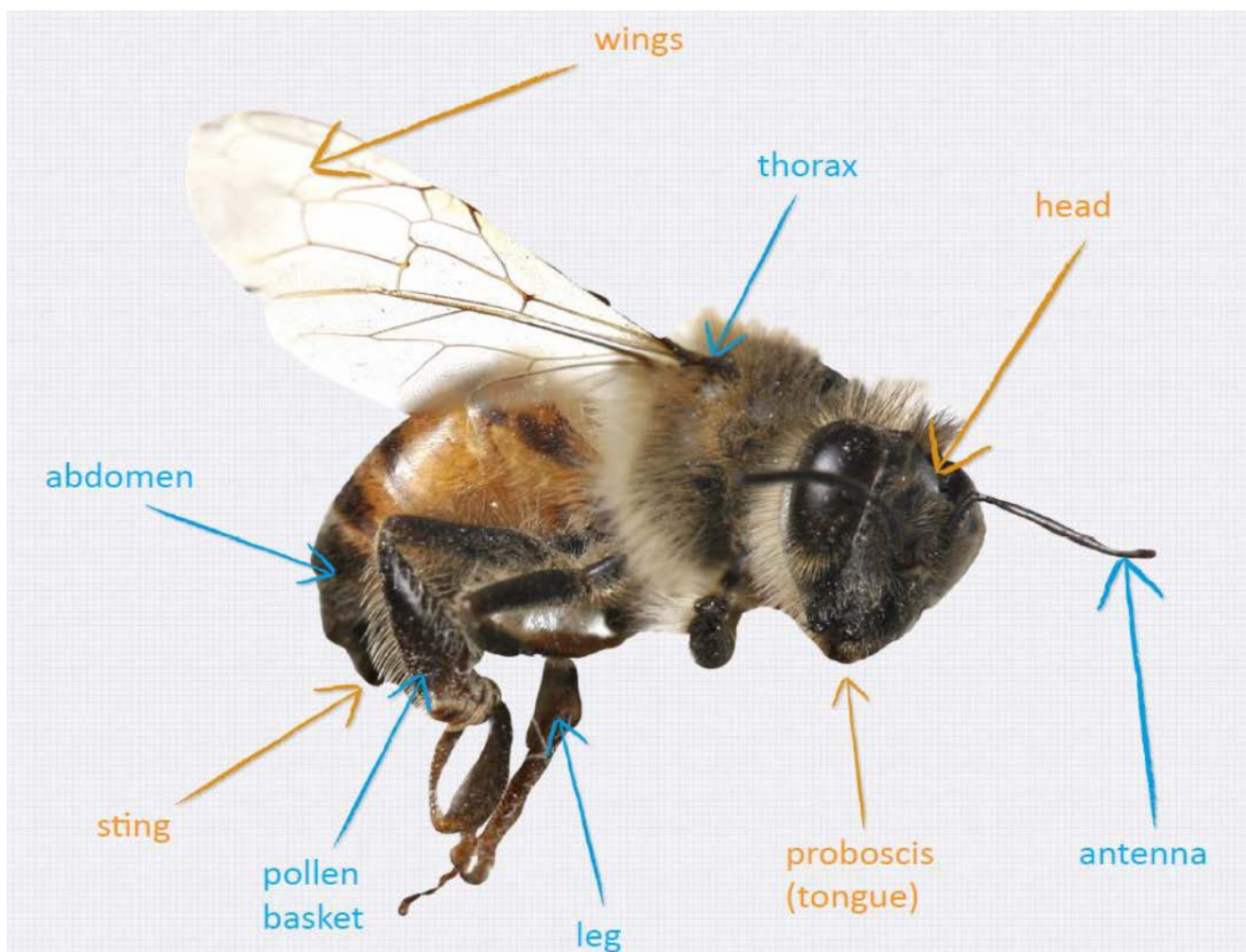


Parts of Bees

A bee has...

- A body with 3 parts... head, thorax and abdomen
- 2 eyes
- 2 antennae... for feeling and smell
- 1 proboscis (tongue)
- 4 wings... on the thorax, 2 large, 2 small
- 6 legs... on the thorax
- Pollen sacks... to collect pollen
- 1 sting... to protect itself



Understanding Bees - Education pack; The Bee World Project; IBRA

What is the same, what is different to other animals? e.g.

Dog

Same...

Different...

Fish

Same...

Different...

Bird

Same...

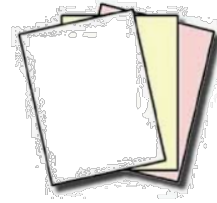
Different...

Frog

Same...

Different...

The Bee Drive Game



You will need:

- A die - 6-sided
- Paper for each player
- Pen / pencil for each player

To play:

- Take turns.
- Roll the die.
- Players must roll a 6 to begin their drawing.
- Draw the body part that matches the number rolled on the die.
- If you already have the part, miss your go.
- The winner is the first person to draw the bee with all the correct parts.



Draw the body (thorax and abdomen)

Draw the head

Draw 1 leg... 6 needed

Draw 1 wing... 4 needed

Draw 1 antennae... 2 needed

Draw the proboscis (tongue)