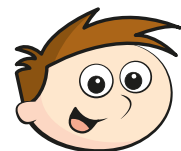


Add mixed numbers

1 Teddy and Mo are adding mixed numbers.



Teddy

$$3\frac{1}{4} + 2\frac{5}{8} = 5 + \frac{7}{8} = 5\frac{7}{8}$$



Mo

$$3\frac{1}{4} + 2\frac{5}{8} = \frac{26}{8} + \frac{21}{8} = \frac{47}{8} = 5\frac{7}{8}$$

Whose method do you prefer? various

Talk about it with a partner.



2 Complete the calculations.

a) $1\frac{2}{5} + 2\frac{3}{10} = 3\frac{7}{10}$

b) $2\frac{2}{5} + 2\frac{3}{10} = 4\frac{7}{10}$

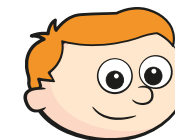
c) $1\frac{3}{4} + 3\frac{3}{20} = 4\frac{9}{10}$

e) $4\frac{1}{4} + 2\frac{11}{16} = 6\frac{15}{16}$

d) $1\frac{3}{16} + 4\frac{3}{4} = 5\frac{15}{16}$

f) $1\frac{4}{15} + 3\frac{2}{3} = 4\frac{14}{15}$

3



$$2\frac{3}{5} + 1\frac{7}{10} = 3 + \frac{13}{10} = 3\frac{13}{10}$$

How can Ron improve his answer?

$$\frac{13}{10} = 1\frac{3}{10} \quad \text{so} \quad 3\frac{13}{10} = 4\frac{3}{10}$$

4

Complete the additions.

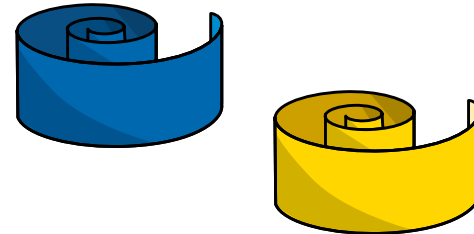
a) $2\frac{3}{4} + 3\frac{5}{12} = 6\frac{1}{6}$

b) $3\frac{2}{3} + 2\frac{7}{12} = 6\frac{1}{4}$

$$c) 5\frac{1}{6} + 3\frac{11}{12} = \boxed{9\frac{1}{2}}$$

$$d) 6\frac{7}{15} + 3\frac{3}{5} = \boxed{10\frac{1}{3}}$$

- 5 A blue ribbon is $2\frac{4}{9}$ metres long.



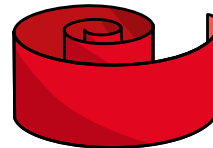
A yellow ribbon is $3\frac{2}{3}$ metres long.

- a) What is the total length of the blue and yellow ribbon?

$$\boxed{6\frac{1}{9}} \text{ m}$$

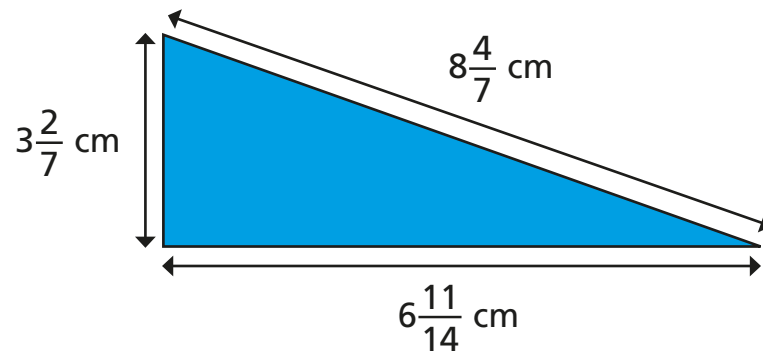
- b) A red ribbon is $1\frac{5}{18}$ metres longer than the yellow ribbon.

How long is the red ribbon?



$$\boxed{4\frac{17}{18}} \text{ m}$$

- 6 Calculate the perimeter of the triangle.



$$\boxed{18\frac{9}{14}} \text{ cm}$$

- 7 Complete the calculation in three different ways.

e.g.

$$\boxed{1} \frac{\boxed{1}}{5} + \boxed{5} \frac{\boxed{8}}{15} = 6 + \frac{11}{15} = \boxed{6\frac{11}{15}}$$

$$\boxed{3} \frac{\boxed{2}}{5} + \boxed{3} \frac{\boxed{5}}{15} = 6 + \frac{11}{15} = \boxed{6\frac{11}{15}}$$

$$\boxed{1} \frac{\boxed{4}}{5} + \boxed{4} \frac{\boxed{14}}{15} = 6 + \frac{11}{15} = \boxed{6\frac{11}{15}}$$

Compare answers with a partner.

- 8 Here are some number cards.

$3\frac{1}{6}$	$2\frac{11}{12}$	$2\frac{5}{6}$	$3\frac{5}{6}$	$4\frac{1}{12}$	$4\frac{1}{3}$
----------------	------------------	----------------	----------------	-----------------	----------------

- a) What is the greatest total you can make with two cards?

$$\boxed{8\frac{5}{12}}$$

- b) What is the smallest total you can make with two cards?

$$\boxed{5\frac{3}{4}}$$